



Phone: (888) 459-4913

Fax: (914) 885-1711

FLYER ISSUE 9, UPDATE 08/16/12

# Phlebotomy for Nursing Personnel - 1

<http://www.piccresource.com>

ONLINE PROGRAM AVAILABLE NOW  
5.5 HOURS TOTAL PROGRAM  
INCLUDES 24/7 ACCESS TO  
REGISTRANTS FOR 6 WEEKS OF  
ENROLLMENT PERIOD \$99.00.  
AVAILABLE FOR PURCHASE IN DVD  
ROM FORMAT \$249.00.

CONTACT HOURS FOR THIS PROGRAM  
WILL BE OFFERED UNTIL SEPT. 01, 2014

**Phlebotomy for Nursing Personnel 1 Class Overview:** Prerequisites: Healthcare background (RN, LPN, PA, CNA, MT, radiology technologist, nursing student, etc. Questions? Call for details or email us at [customer\\_support@piccresource.com](mailto:customer_support@piccresource.com)

- |  |  |   |
|--|--|---|
| * Anatomy and Physiology   | * Capillary puncture techniques                                    | with patients with poor veins   |
| * Devices & Methods used for venipuncture & capillary sample collections     | * Tubes and tube additives   | * Phlebotomy post test  |
| * OSHA regulations   | * Tests and Order of Draw  | * Evaluation, & certificate of completion   |
| * Personal Protective Equipment  | * Prevention of test result errors                                 | * Online: enrollment for 6 weeks; DVD ROM: keep the discs for repeated use.           |
| * National standards of the Clinical Laboratory & Standards Institute (CLSI) | * Patient identification   | * 5.5 Contact hours   |
| * Preparation of Supplies and equipment                                      | * Sample handling, prevention of test result errors                | **Contact hours from an ANCC accredited approver are earned and are valid nationally. |
| * Site selection, preparation  | * Complications of phlebotomy procedures, prevention and treatment |   |
| * Venipuncture techniques  | * Legal Issues   |   |
|  | * Tips for success for use   |   |

**Details:** Available online by demand 24/7. Price: \$99.00 for full online program. \$249.00 for DVD ROM Format. Course time average 5 and a half hours to complete course & post test. 5.5 contact hours offered until August 17, 2012..

**Instructor:** Alice Cennamo, RN, CRNI, CPI, VA-BC. Alice is a Certified Phlebotomy Instructor certified by the National Phlebotomy Association (NPA), and a nationally certified Infusion and board certified Vascular Access Specialist certified by the INCC and the VACC.

**To Register:** Registration and payment can be completed on our website at :

<http://cart-catalog.piccresource.com>

or called into orders dept. 24/7:

Main# (888) 459-4913, press option 2

Or mailed or faxed into us. Our mailing address is:

4 Research Drive

Suite 402

Shelton, CT 06484

Fax number: (914) 885-1711

***Beware of Certification Claims!***  
Anyone can claim to offer certification and employers are aware that the term is loosely used by a lot of companies. Where is the certification from? National certification through a private company means very little. True certification is a validation process designed to verify competence and *independence*.  
Phlebotomy certification is legitimately granted by organizations that are accredited by well established national accreditation organizations and/or organizations that set phlebotomy standards and guidelines. This phlebotomy class is designed to instruct nurses and other health care professionals in venous and capillary blood sample collection procedures. The content includes common point of care tests ordered in nursing units, clinics, physician offices, rehab, and long term care. If national certification is desired, we offer a full phlebotomy program that allows participants to sit for the NHA National Certification Exam upon program completion. Go to [http://www.piccresource.com/phlebotomy\\_class.php](http://www.piccresource.com/phlebotomy_class.php) for info.

## Phlebotomy for Nursing Personnel-I Class

(There is no commercial support or conflict of interest for this activity.)

**Target audience:** Nurses, nursing personnel and other health care professionals that are allowed to draw blood samples per state regulations as part of their job.

**Purpose:** The learner will increase his/her knowledge of phlebotomy venipuncture, capillary puncture techniques, common blood tests, and sample handling

Activity Goals and Objectives- Upon successful completion of this activity the attendee will be able to:

- 1: Describe the effects of venipuncture on the vein wall.
- 2: Describe veins appropriate for phlebotomy procedures.
- 3: List two devices used for collection of blood samples
- 4: State the rationale for drawing into tubes in the correct order.
- 5: Describe methods to prevent test result errors.
- 6: Describe three potential complications of a phlebotomy procedure.
- 7: Describe how to choose a viable vein for venipuncture.
- 8: List two steps in obtaining a blood sample utilizing the vacutainer or syringe method
- 9: List two steps of the Skin Puncture technique for capillary blood sampling
- 10: Score 75% or better on Phlebotomy test

To register and pay online, follow the instructions on page 1. Our info for mail in or fax follows below.

Fax of credit card- Enter card Type: \_\_\_\_\_

Card#: \_\_\_\_\_

Expiration date: \_\_\_\_\_ Security Code: \_\_\_\_\_

Billing name & address match registrant? If not enter here: \_\_\_\_\_

Checks payable to: PICC Resource Associates, LLC

Mailing address: 4 Research Drive, Suite 402

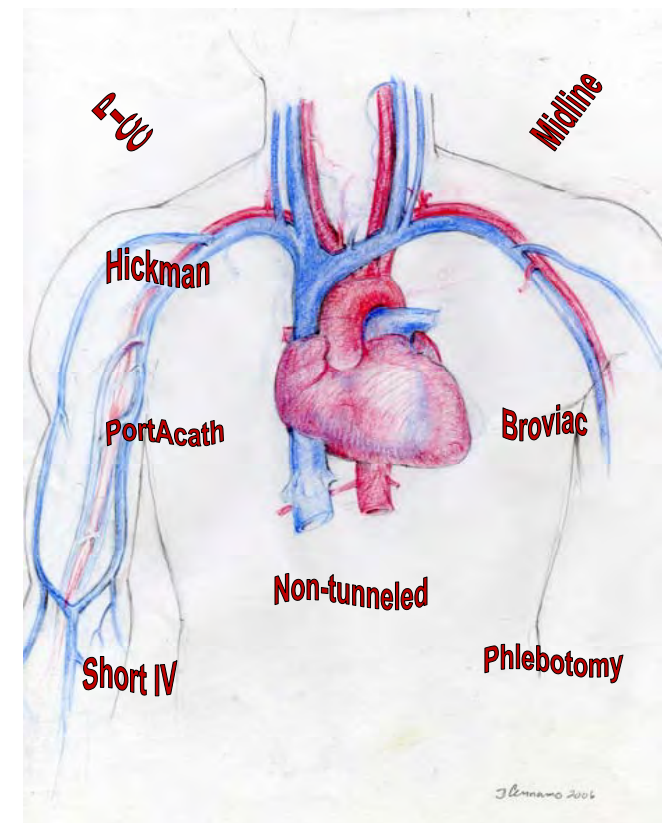
Shelton, CT 06484

Fax: (914) 885-1711

PICC  
Resource  
Associates, LLC  
4 Research Drive  
Suite 402  
Shelton, CT 06484

PICC  
Resource  
Associates, LLC  
Venous Access Educators and Consultants

Phlebotomy - Independent Study  
Online / DVD ROM Program



<http://www.piccresource.com>

(888) 459-4913

Program Update

*\*\*This continuing nursing education activity has been submitted to ANA-Maine for approval to award contact hours. ANA-Maine is an accredited approver by the American Nurses Credentialing Center's Commission on Accreditation.*