



Main: (888) 459-4913

Fax: (888) 842-7442

UPDATE: March 14<sup>TH</sup> 2017

# Phlebotomy Workshop Lab Group Class 2017

<http://www.piccresource.com>

**Program Overview:** This programs three lab sessions are designed to complement our Phlebotomy Certification Class Online Program. Day or evening sessions are available offered at PICC Resource Associates, LLC located in Shelton, CT (Address: 865 River Road, Suite 201, Shelton, CT). **Prerequisites:** Acceptance into our Phlebotomy Certification Class and completion of Lessons 8 & 9. Nurses: may take our Phlebotomy for Nursing Personnel online class as a prerequisite for this class.

2017 Dates:	Place	Time
Scheduled with group according to need and available calendar dates:	PICC Resource Associates  Office: 865 River Rd Suite 201 Shelton, CT	3 dates, 4 hours per session.  Time scheduled per group need & calendar availability.

## Program Details:

- \* Presented in four 3 hour sessions once a week for four weeks.
- \* Program is Instructor led by our Certified Phlebotomy Instructor: Alice Cennamo, RN, CRNI, CPI, VA-BC. Registered nurse since 1992, certified phlebotomy instructor by the National Phlebotomy Association, certified infusion specialist, and board certified in vascular access.
- \* Hands-on practice with phlebotomy equipment
- \* Hands-on identification of veins suitable for venous access.
- \* Hands on venipuncture and capillary puncture practice
- \* Competency checklists will be utilized and filled in. Completion of checklists as part of program requirement.
- \* Program is designed to meet NHA venipuncture and capillary puncture requirements to meet eligibility to take the NHA Phlebotomy Technician Certification Exam (Note: Only when Phlebotomy Certification Class is completed)
- \* Program incorporates: OSHA regulations, standard precautions, National standards of the CLSI, order of draw, and more.
- \* 3 lab dates total offered per program. **Participants must attend all 3 dates to successfully complete the program.**
- \* Lab Dates: scheduled in 3, four hour sessions, 3 dates total for the course. Day or evening available.

**Price: \$3,000.00 THIS COURSE IS DESIGNED FOR GROUP SIGN UP. THE FEE INCLUDES THE COST OF THE FULL COURSE REGARDLESS OF THE NUMBER OF ATTENDEES, INCLUDING ALL 3 SESSIONS HELD AT OUR TRAINING CENTER IN SHELTON, CONNECTICUT, WITH UP TO SIX ATTENDEES ALLOWED PER COURSE.**

**How to Apply:** Apply first for our Phlebotomy Certification Class. Indicate in the application that you would like to attend the Phlebotomy In-Person Lab Class. You may apply online and choose the Lab Option add on as part of the Phlebotomy Certification Class. Program fees are payable at the time of

application. Register early to get the best schedule options on our training calendar! Apply online at: <http://cart-catalog.piccresource.com/>  
OR Call our main number 24/7 at: (888) 459-4913, press option 1 for education and follow the prompts.

To fax the application on page 2, fax to (888) 842-7442. Or email us at: [customer\\_support@piccresource.com](mailto:customer_support@piccresource.com)

If you have an urgent request and it is after office hours (weeknights/weekends): call (888) 459-4913, and hold for an operator to reach us on call.

## Requirements:

- 1.) Applicants to this program must be eligible and accepted for registration into our Phlebotomy Certification Class OR our Phlebotomy for Nursing Personnel Class. For details go to: <http://cart-catalog.piccresource.com/phlebotomy-courses-3/>
- 2.) Apply for this program along with registration into our online Phlebotomy Class or after enrolment in one of the Phlebotomy Classes.
- 3.) IF YOU HAVE NOT already completed the Phlebotomy Certification Class application, you may apply for both programs using the application found on page 2 of this form.
- 4) The Phlebotomy for Nursing Personnel online class \$99 - must be applied for separately, go to the link above for details or call us.

**Note: Although nurses may take the shorter class: Phlebotomy for Nursing Personnel online class to qualify to attend this lab class; taking the shorter prerequisite class will not meet eligibility to sit for the phlebotomy certification exam.**

Completion of the our phlebotomy certification online class plus this lab program does qualify participants to sit for the NHA Phlebotomy Certification Exam. Program participants are solely re-sponsible for studying program material to sit for and pass the NHA Phlebotomy exam.

## Phlebotomy In-Person Lab Class

(There is no commercial support for this activity.)

If you will fax in your application: Fill in the sections below as clearly as possible including your email address notifications of acceptance of the application are sent via email. Our fax number is: (888) 842-7442. Applications may be mailed in to our Shelton, CT office. Upon application acceptance, we will contact you by email. Payment may be made by credit card or check (checks by regular mail only).

Full Name (for billing also)

Mailing Address Street (for billing also)

Mailing Address City, State, Zip Code

Best Phone Number for Contact

Email Address to send confirmations

Profession and credentials (example Nurse, RN)  
State: \_\_\_\_\_

Professional License or Certification Number & State

If enrolled in a healthcare training program— enter level (1st year, senior, etc.) and expected graduation date

Employer or Training program Name and Location May we contact your employer or training program?

\_\_\_\_ Yes, \_\_\_\_ No (Contact necessary for certain professions CNA, EMT, etc; not applicable for nurses, physicians, and advanced practice professions).

Supervisor or Training Administrator Phone Number

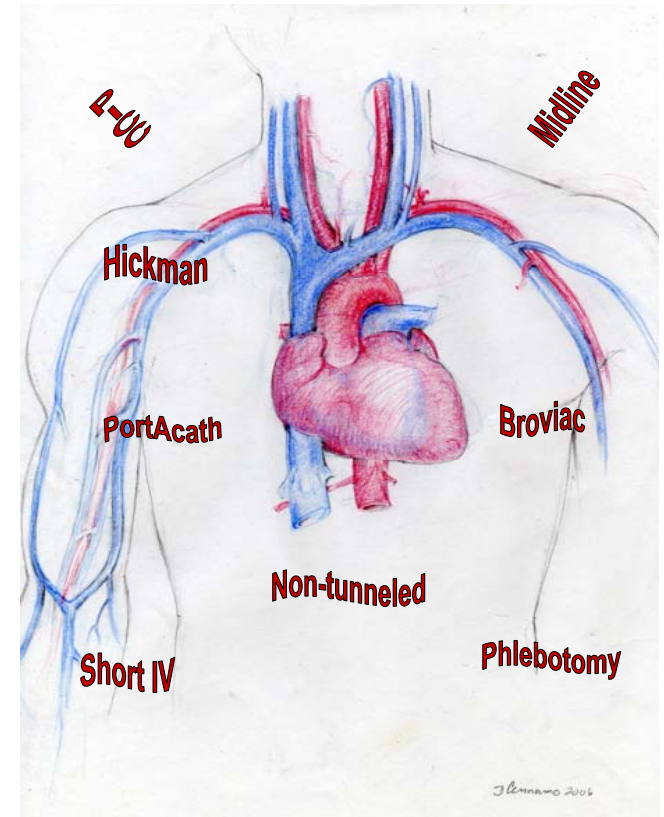
Lab Practicum Dates and Times: Early registration/ schedule requests encouraged. Lab dates are scheduled by group need and PICC Resource calendar availability. Three 4 hour sessions, 3 dates (one session per date) may be scheduled. Day or evening times available. 2017 class fees: In-Person Lab Class fee: \$3,000.00 per course (not per attendee) fee is for up to 6 attendees. Plus the cost of one of our prerequisite online phlebotomy classes (see page one).

PICC  
Resource  
Associates, LLC  
865 River Road  
Suite 201  
Shelton, CT 06484

PICC  
Resource  
Associates, LLC

Venous Access Educators and Consultants

Phlebotomy In-Person Lab Class  
2017



<http://www.piccresource.com>

Phone: (888) 459-4913