



Phone: (888) 459-4913

Fax: (914) 885-1711

FLYER ISSUE 7, UPDATE 10/01/11

Phlebotomy for Nursing Personnel - 2011

<http://www.piccresource.com>

Phlebotomy for Nursing Personnel 1 Class Overview: Prerequisites: Healthcare background (RN, LPN, PA, CNA, MT, radiology technologist, nursing student, etc. Questions? Call for details or email us at customer_support@piccresource.com

ONLINE PROGRAM AVAILABLE NOW
2 WEBINAR SESSIONS- 5.5 HOURS
TOTAL PROGRAM INCLUDES 1 HOUR
POST TEST.

24/7 ACCESS TO REGISTRANTS FOR 6
WEEKS OF ENROLLMENT PERIOD.

\$99.00 FOR COMPLETE PROGRAM

CONTACT HOURS FOR THIS PROGRAM

WILL BE OFFERED UNTIL AUG. 17, 2012

- | | | |
|--|--|---|
| * Anatomy and Physiology | * Capillary puncture techniques | * Tips for success for use with patients with poor veins |
| * Devices & Methods used for venipuncture & capillary sample collections | * Tubes and tube additives | * Phlebotomy exam |
| * OSHA regulations | * Tests and Order of Draw | * Evaluation, & certificate of completion |
| * Personal Protective Equipment | * Prevention of test result errors | * NEW Fall 2011- Access course up to 6 weeks! |
| * National standards of the Clinical Laboratory & Standards Institute (CLSI) | * Patient identification | * 5.5 Contact hours |
| * Preparation of Supplies and equipment | * Sample handling, prevention of test result errors | **Contact hours from an ANCC accredited approver are earned and are valid nationally. |
| * Site selection, preparation | * Complications of phlebotomy procedures, prevention and treatment | |
| * Venipuncture techniques | * Legal Issues | |
| | * Case studies | |

Details: Available online by demand 24/7. Price: \$99.00 for full program with the online exam. Program with exam total time: 5 and a half hours. 5.5 contact hours offered until August 17, 2012.

Instructor: Alice Cennamo, RN, CRNI, Certified Phlebotomy Instructor through the National Phlebotomy Association (NPA), and Infusion Specialist certified by the Infusion Nurses Certification Corporation (INCC).

To Register: Registration and payment can be completed on our website at :

<http://www.piccresource.com/cart>

or mailed or faxed into us. Our mailing address is:

4 Research Drive
Suite 402
Shelton, CT 06484

Main number: (888) 459-4913

Fax number: (914) 885-1711

Beware of Certification Claims!

Anyone can claim to offer certification and employers are aware that the term is loosely used by a lot of companies.

Where is the certification from? National certification through a private company means very little. True certification is a validation process designed to verify competence and *independence*.

Phlebotomy certification is legitimately granted by organizations that are accredited by well established national accreditation organizations and/or organizations that set phlebotomy standards and guidelines This phlebotomy class is designed to instruct nurses and other health care professionals in venous and capillary blood sample collection procedures. The content includes testing commonly ordered within nursing units, clinics, physician offices, rehab, and long term care. If national certification is desired, we offer a full phlebotomy program that allows participants to sit for the NHA National Certification Exam upon program completion. Go to http://www.piccresource.com/phlebotomy_class.php for info.

Phlebotomy for Nursing Personnel Class

(There is no commercial support for this activity.)

Target audience: Nurses, nursing personnel and other health care professionals that are allowed to draw blood samples per state regulations as part of their job.

Overall goal of the activity: To instruct nursing and other health care professionals in phlebotomy venipuncture, capillary puncture techniques, common blood tests, and sample handling.

Activity Goals and Objectives- Upon successful completion of this activity the attendee will be able to:

- 1: Describe the effects of venipuncture on the vein wall.
- 2: Describe veins appropriate for phlebotomy procedures.
- 3: List two devices used for collection of blood samples
- 4: State the rationale for drawing into tubes in the correct order.
- 5: Describe methods to prevent test result errors.
- 6: Describe three potential complications of a phlebotomy procedure.
- 7: Describe how to choose a viable vein for venipuncture.
- 8: List two steps in obtaining a blood sample utilizing the vacutainer or syringe method
- 9: List two steps of the Skin Puncture technique for capillary blood sampling
- 10: Score 75% or better on Phlebotomy test

To register and pay online, follow the instructions on page 1. Our info for mail in or fax follows below.

Fax of credit card- Enter card Type: _____

Card#: _____

Expiration date: _____ Security Code: _____

Billing name & address match registrant? If not enter here: _____

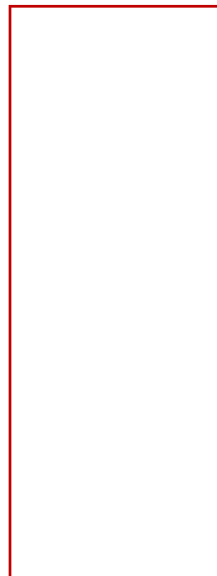
Checks payable to: PICC Resource Associates, LLC

Mailing address: 4 Research Drive, Suite 402

Shelton, CT 06484

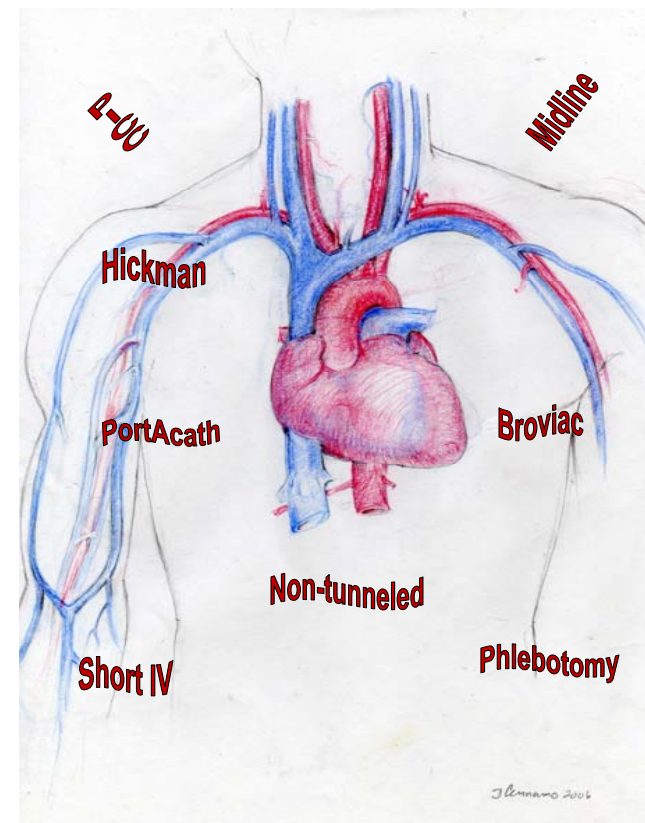
Fax: (914) 885-1711

**PICC
Resource
Associates, LLC**
4 Research Drive
Suite 402
Shelton, CT 06484



**PICC
Resource
Associates, LLC**
Venous Access Educators and Consultants

**Phlebotomy - Independent Study
Online/DVD ROM Program 2011**



<http://www.piccresource.com>

(888) 459-4913

Program Update