



Phone Toll Free: (888) 459-4913  
or Fax: (914) 885-1711

## Short IV Insertion Class January/March 2012

<http://www.piccresource.com>

**Short IV Insertion Class Overview:** NOTICE For potential attendees: It is the responsibility of the program attendee to ensure that the course subject matter is within an attendee's clinical scope of practice prior to signing up for the program. Prerequisites: Designed for RN, LPN, NP, PA, MD, RT and other healthcare personnel. All attendees, and in particular non-licensed healthcare professionals must be diligent to ensure attendance is appropriate for their profession.

- \* Pre-procedure steps
- \* Order verification
- \* Patient Identification
- \* Patient teaching
- \* Anatomy and Physiology related to peripheral short IV catheter insertion
- \* INS Standards, AVA, JC, CDC guidelines & recommendations
- \* Preparation of supplies and equipment
- \* Patient and clinician comfort
- \* Vein site selection
- \* Catheter and introducer device and size election
- \* Use of visualization aide technologies
- \* Site preparation
- \* Insertion & flushing procedures
- \* Catheter securement
- \* Documentation
- \* Complication identification and management
- \* Legal Issues
- \* Common problems
- \* Tips for success
- \* Simulated IV catheter insertions lab practicum
- \* Certificate of contact hours awarded from ANCC Approver valid nationally\*\*
- \* Instruction led by practicing infusion and vascular access nurse specialist (CRNI & VA-BC) with 15+ years experience.

### Day of the Class-Be Prepared to...

*Wear comfortable clothing class is informal; jeans or scrubs are fine. Ask questions, join in the discussion! Learn and laugh! The hotel provides a full hot break-*

*fast for overnight guests. Lunch is on us! A light lunch will be served. For overnight stays at the class site: Call the hotel: (203) 377-3322 Give the discount code: PIC to*

*receive our discounted room rate ( book early limited number of rooms available). Hotel website: <http://www.homewoodsuites.hilton.com/>*

WINTER FLYER, ISSUE 25

UPDATE: DECEMBER 7TH 2011

**Schedule a group class at your facility!**

Date(s):	Place	Time
01/28/2012 03/31/2012	Homewood Suites 6905 Main St. Stratford, CT	8:30 am- 2:00 pm

**Discounts for three or more!**

**Price: \$165.00 per participant**  
We prefer to have registrations in by 4 weeks prior to the class start date, but we continue to take registrations after that time until a class is full.  
Registration and payment can be done online, phone, fax, or by regular mail:

Online at:  
<http://www.piccresource.com/cart>

Phone Toll Free: (888) 459-4913  
We have receptionists available during regular office hours to direct you.  
After hours: To sign up for a class; press extension 2 for our Orders Department available daily 24/7 to take registrations and payments. For questions; press extension 3.  
Fax: (914) 885-1711  
See page 2 for our mailing address.

\*\*This continuing nursing education activity was approved by ANA-Maine, an accredited approver by the American Nurses Credentialing Center's COA.

## Short IV Insertion Classes

**Target audience:** Nurses and other health care professionals who may insert intravenous catheters as part of their job.

**Overall goal of the activity:** To instruct nurses and health care professionals in short IV catheter insertion procedures, and in short IV catheter complication prevention and management .

**Requirements for Successful Completion:** Successful demonstration of the IV insertion procedure, and attendance of the full program.

**Commercial Support/ Conflict of Interest:** There is no commercial support or conflict of interest for this activity.

Classes will be held at the Homewood Suites Hotel located at 6905 Main Street, Stratford, Connecticut 06614. To register for a room call (203) 377-3322; notify staff you will attend a PICC Resource program give our name "PICC Resource" for a discounted room rate . To sign up by fax or mail in; call us first to check availability. Otherwise register online or call us.

<http://piccresource.com/cart>

Name of Attendee: \_\_\_\_\_

Address of Attendee: \_\_\_\_\_

Telephone number: \_\_\_\_\_

Email Address: \_\_\_\_\_

Comments or additional Information: \_\_\_\_\_

Fax of credit card- Enter card Type: \_\_\_\_\_

Card#: \_\_\_\_\_

Expiration date: \_\_\_\_\_ Security Code: \_\_\_\_\_

Billing name & address match registrant? If not enter here: \_\_\_\_\_

Checks payable to: PICC Resource Associates, LLC

Mailing address: 4 Research Drive

Suite 402

Shelton, CT 06484

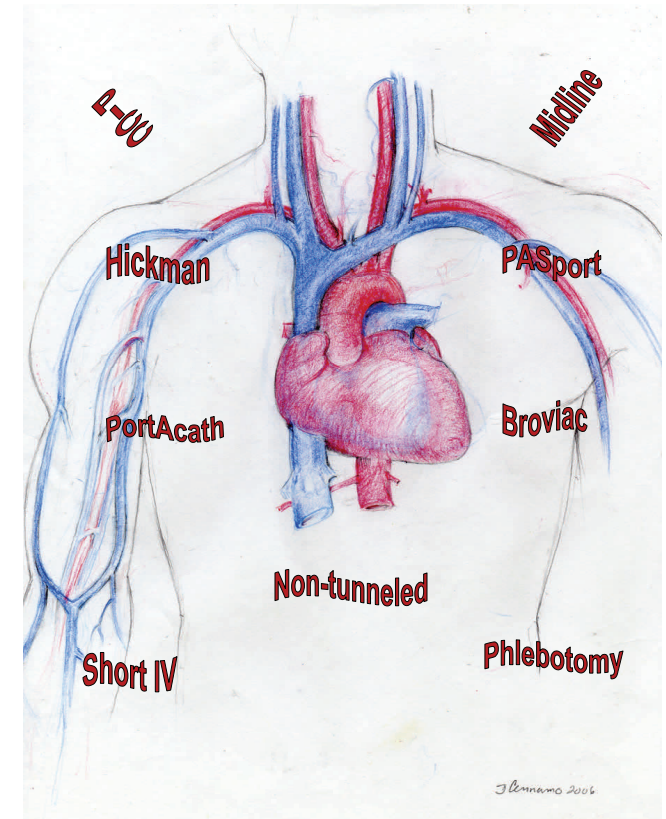
Phone: (888) 459-4913, press option 2 for orders 24/7.

Fax: (914) 885-1711

PICC  
Resource  
Associates, LLC  
4 Research Drive  
Suite 402  
Shelton, CT 06484

PICC  
Resource  
Associates, LLC  
Venous Access Educators and Consultants

Connecticut Short IV Insertion  
Program: January/March 2012



<http://www.piccresource.com>

(888) 459-4913