

Test Your IV Access Knowledge- Questions

Multiple Choice, 15 points

1. According to the 2002 CDC Guidelines for the Prevention of Intravascular Device Related Infections; routine Central Line dressing changes (transparent occlusive type) should be performed within what time interval?

- Every 4 days Every other day
 Every 7 days

Multiple Choice, 20 points

2. The correct catheter tip placement for arm placed PICC Lines is:

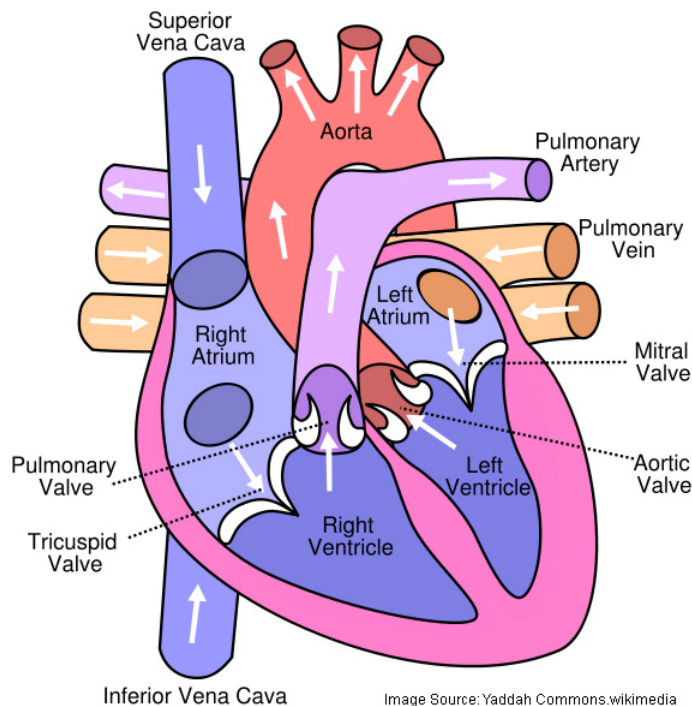
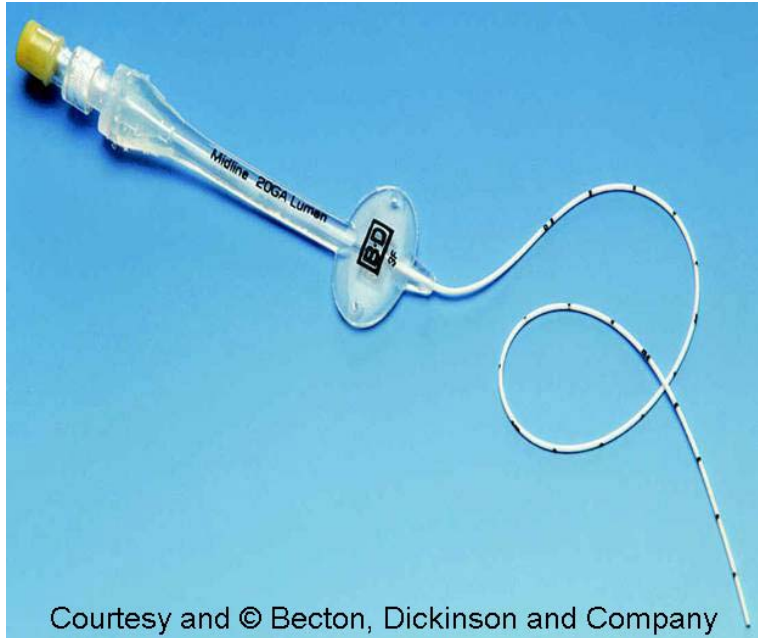


Image Source: Yaddah Commons.wikimedia

- The inferior vena cave The upper half of the superior vena cava
 From the lower third of the superior vena cava to the caval atrial junction The right atrium of the heart

3. According to Infusion Nurses Standards of Practice, a midline catheter can remain indwelling for up to 4 weeks.



True

False

Multiple Choice, 15 points

4. According to the current Infusion Nurses Standards of Practice, a PICC Line catheter can remain indwelling for how long?

6 months

4 weeks

1 year

Time period is undetermined

Multiple Response, 15 points

5. Select all of the medications from this list that are known to cause tissue injury and necrosis when administered through NON central IV catheters.

Dopamine

Phenergan

Penicillin

Insulin

6. This image is an example of the complication:

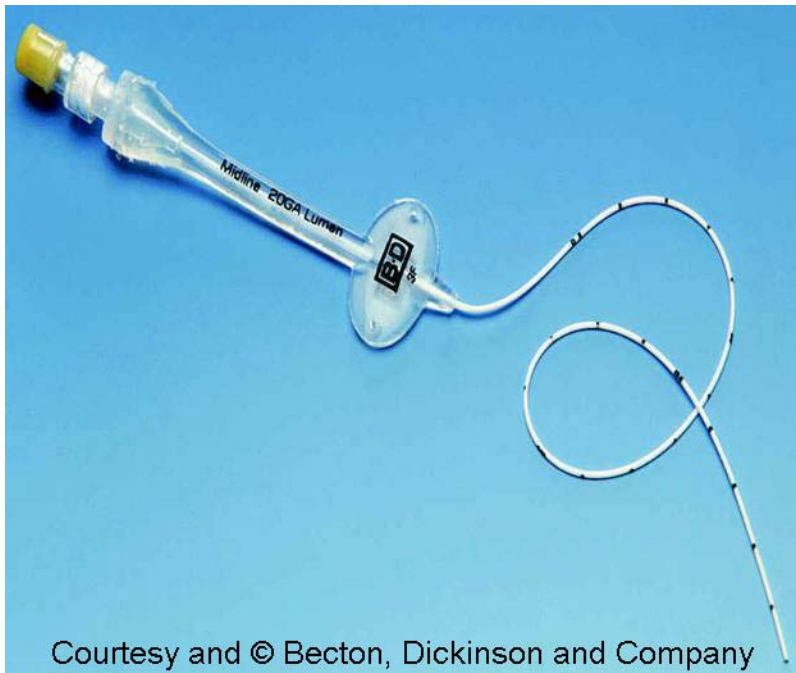


- Infection
- Phlebitis

Infiltration

True/False, 10 points

7. Medications that cause vein irritation should be infused through a midline catheter.



True

False